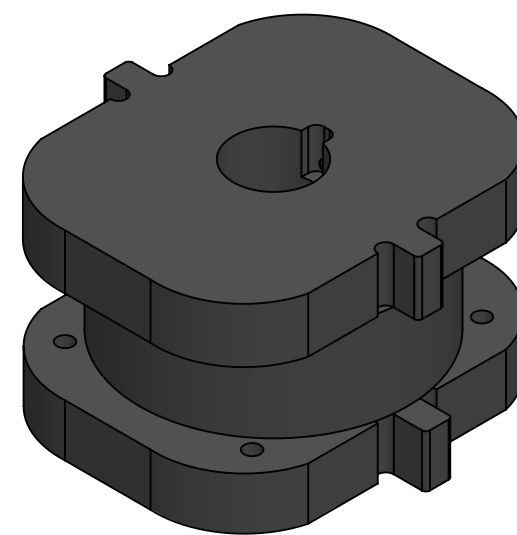
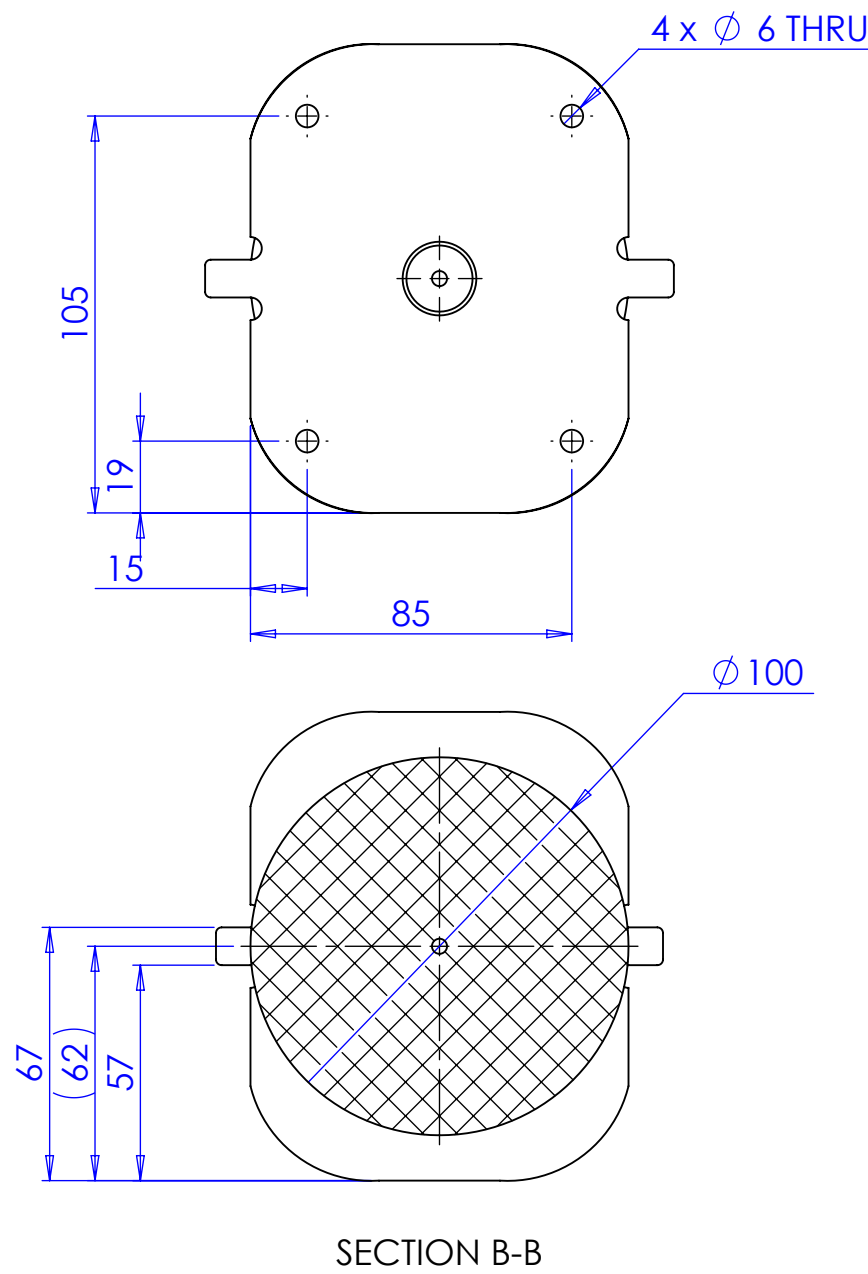
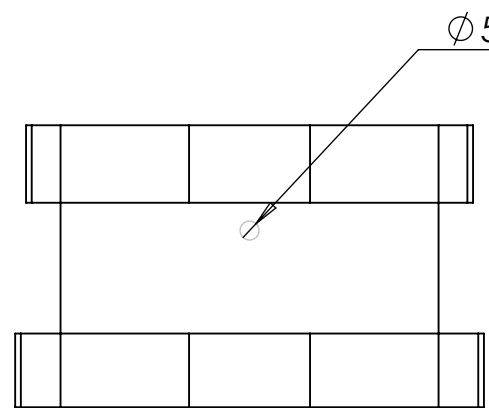
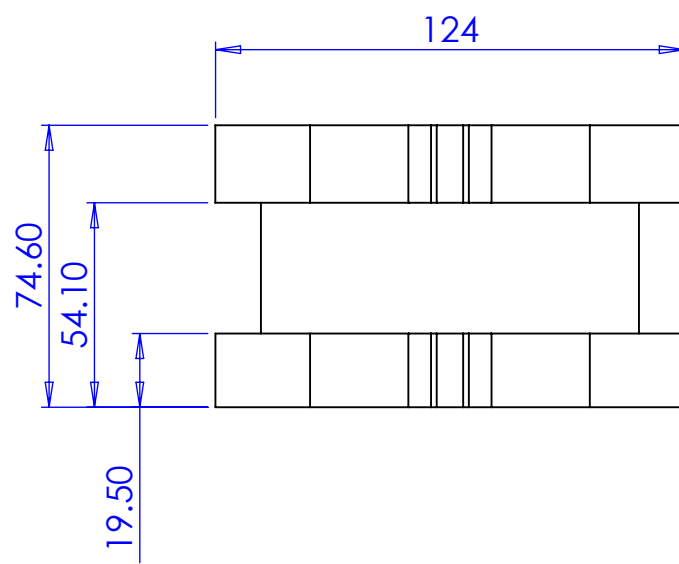
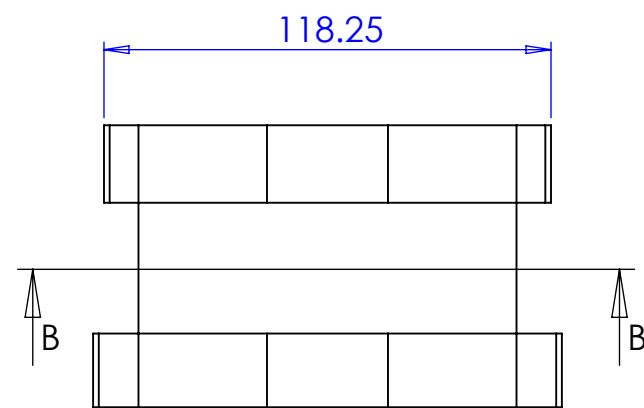
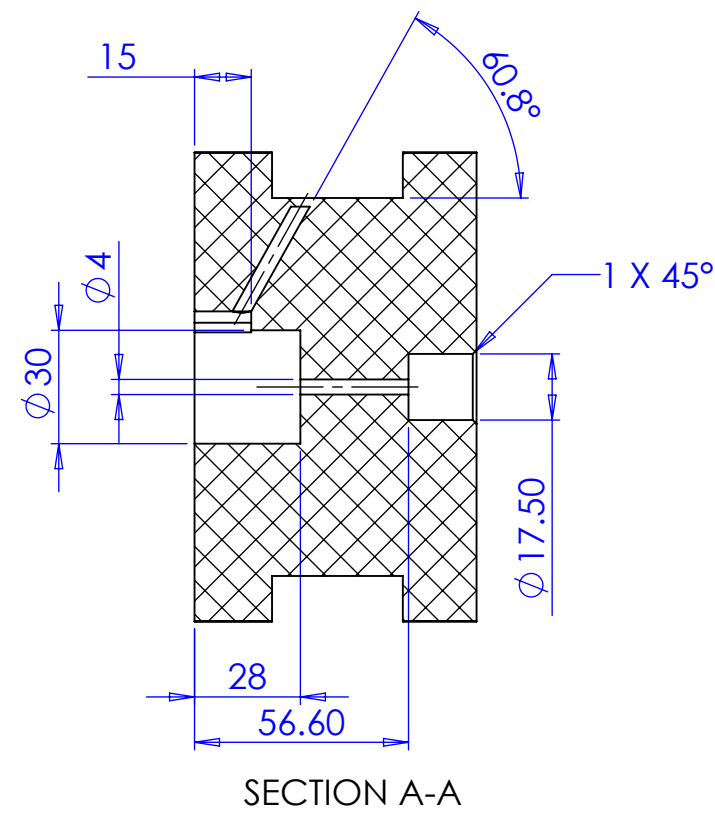
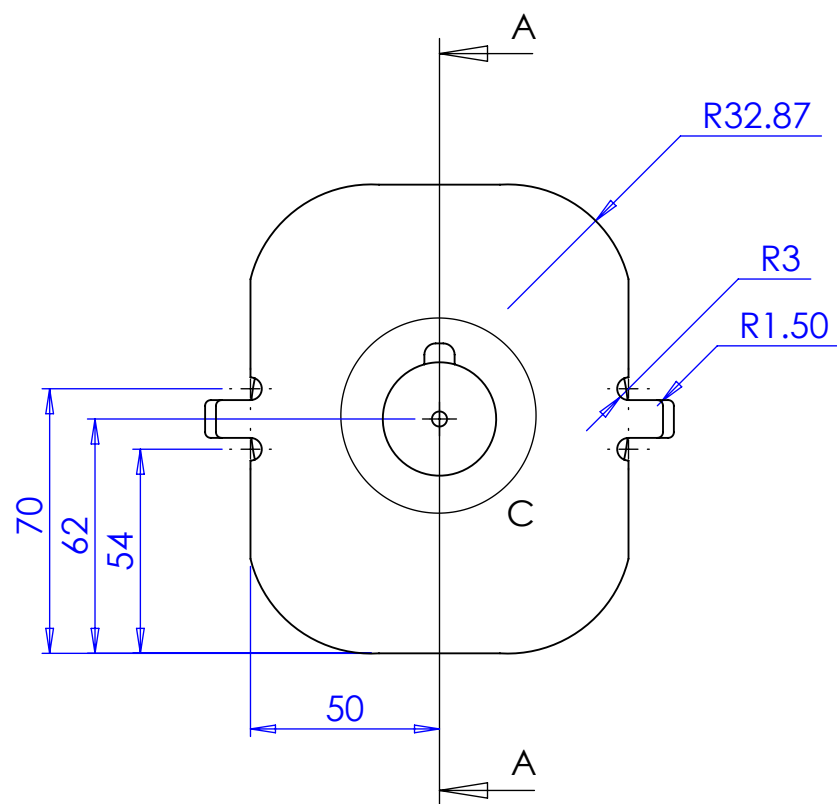
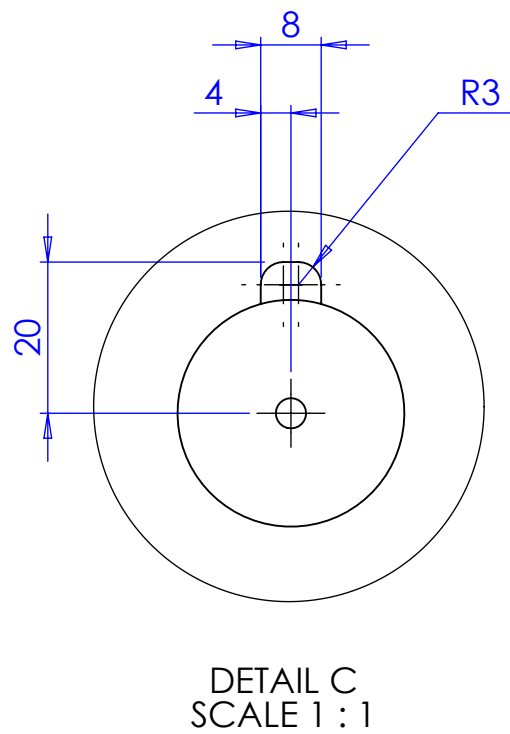
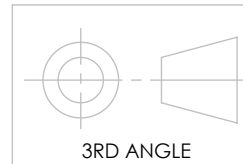




REV.	DESCRIPTION	DATE	STATUS	APPROVED
A	NEW ISSUE	06/04/2017	ISSUED	TP



DO NOT SCALE DRAWING - DRAWN ON SOLIDWORKS
IF IN DOUBT ASK



 Home Office Centre for Applied Science and Technology	UNLESS OTHERWISE SPECIFIED: 1. DIMENSIONS ARE IN MILLIMETRES 2. GENERAL TOLERANCES: ± 0.10 3. HOLES: ± 0.10 4. ANGLES: $\pm 0.25^\circ$ 5. DE-BURR ALL HOLES & SHARP EDGES		MATERIAL: POM Acetal Copolymer	FINISH: NATURAL
			SECURITY: OFFICIAL	WEIGHT: 991.03 g VOLUME: 712968.91 mm ³
			TITLE: LOWER ELECTROMAGNETIC LIFT	
			DWG NO: M100700	JOB NUMBER: N/A
 Home Office Centre for Applied Science and Technology	Woodcock Hill Sandridge St Albans AL4 9HQ Tel: 01727-815051 Email: cast@homeoffice.gsi.gov.uk		PROJECT NAME: BDY ARM STD PROJECT CODE: 183 ADELPHI CODE: 9564130	
			USED ON: M100703	STEP FILE NAME: STEP-M100700-A
			FILENAME: M100700	STL FILE NAME: STL-M100700-A
			SCALE: 1:2	SHEET 1 OF 1 DXF FILE NAME: DXF-M100700-A A2