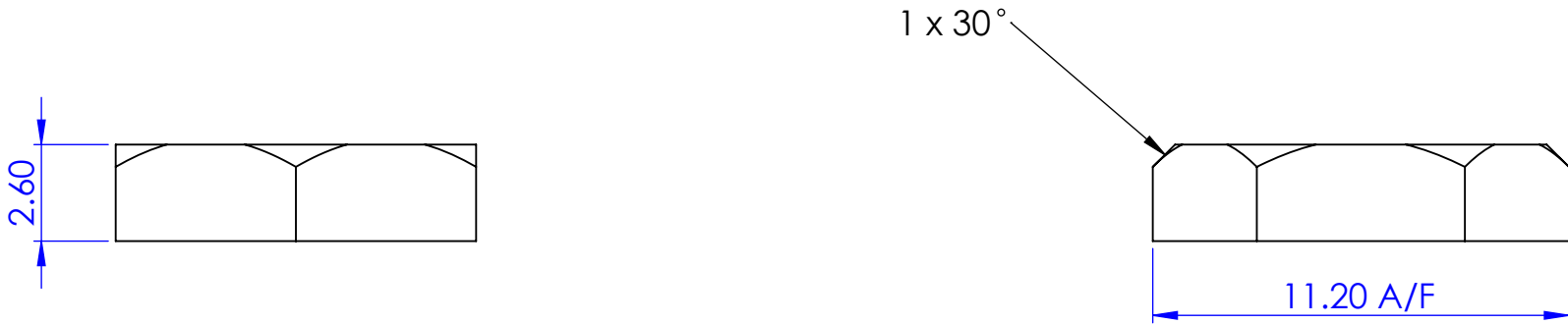
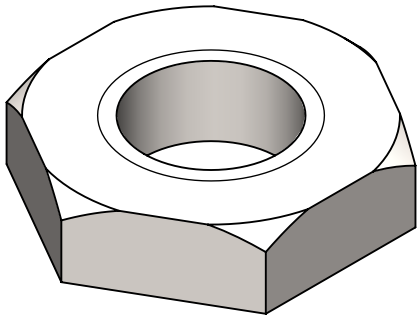
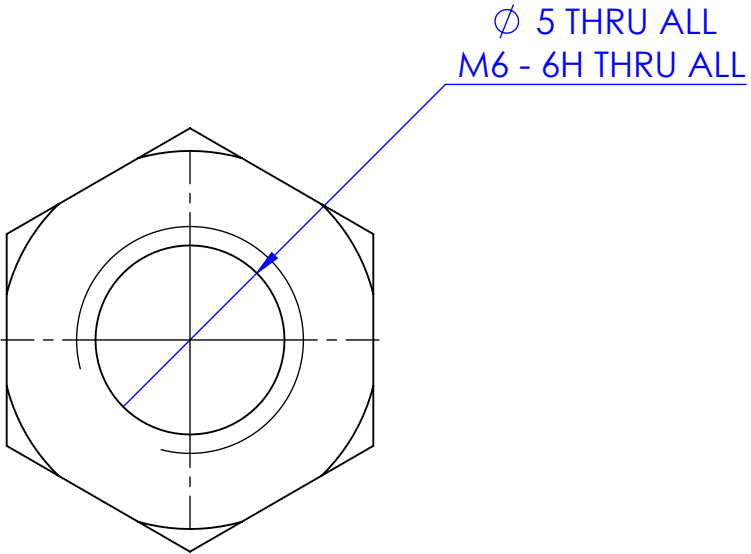
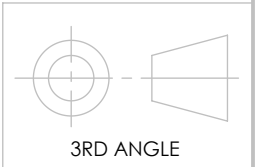



REV.	DESCRIPTION	DATE	STATUS	APPROVED BY
B	REDRAWN TO NEW STANDARD	06/04/2017	ISSUED	TP



DO NOT SCALE DRAWING - DRAWN ON SOLIDWORKS
IF IN DOUBT ASK



NOTE:
MADE FROM MODIFIED M6 NUT OR HEX BAR STOCK

<div></div> <div>Home Office</div> <div>Centre for Applied Science and Technology</div>	<div>UNLESS OTHERWISE SPECIFIED:</div> <div>1. DIMENSIONS ARE IN MILLIMETRES</div> <div>2. GENERAL TOLERANCES: ±0.10</div> <div>3. HOLES: ±0.10</div> <div>4. ANGLES: ±0.25°</div> <div>5. DE-BURR ALL HOLES & SHARP EDGES</div>		MATERIAL:		FINISH:	
			AISI 304		NATURAL	
			SECURITY:		WEIGHT:	
			OFFICIAL		1.28 g	
				VOLUME:		
				159.95 mm³		
		TITLE:				
		CUSTOM M6 NUT				
		DWG NO:		JOB NUMBER :		
		M100674		N/A		
		USED ON: M100669		STEP FILE NAME :		
				STEP-M100674-B		
		FILENAME: M100674		STL FILE NAME :		
				STL-M100674-B		
				DXF FILE NAME :		
				DXF-M100674-B		
		SCALE:5:1		SHEET 1 OF 1		
				A3		

Woodcock Hill
Sandridge
St Albans
AL4 9HQ

Tel: 01727-815051
Email: cast@homeoffice.gsi.gov.uk

PROJECT NAME :	REV BODY ARMR STD
PROJECT CODE :	183
ADELPHI CODE :	800823 9564130

HOME OFFICE CENTRE FOR APPLIED SCIENCE AND TECHNOLOGY (HOME OFFICE CAST) ©2017. THIS DOCUMENT CONTAINS COMMERCIAL SENSITIVE INFORMATION, ITS CONTENTS ARE THE PROPERTY OF HOME OFFICE CAST. IT MAY NOT BE USED, COPIED OR DISCLOSED WITHOUT THE PRIOR AUTHORIZATION OF HOME OFFICE CAST. PRINTED COPIES MUST BE KEPT SECURE AND NOT READ IN AN UNSECURE ENVIRONMENT. THIS DOCUMENT IS RETURNABLE ON DEMAND.